



# ANVC CONFERENCE

---

NOVEMBER 15 & 16 | ADERO SCOTTSDALE  
SCOTTSDALE, ARIZONA

---



Join us, and get involved in improving quality and access to stroke care.

**ASSOCIATION OF NEUROVASCULAR CLINICIANS (ANVC)**

**14.9 CE CREDITS (3.75 PHARMACOLOGY HOURS)**

## MESSAGE FROM THE PROGRAM CHAIR

On behalf of the Association of Neurovascular Clinicians (ANVC), we invite you to join us for our 2021 Annual Meeting. We're excited for this live-in person conference in beautiful Scottsdale, Arizona. This conference is focused on provision of state-of-the-science, acute stroke clinical and imaging-based diagnosis, methods for determination of stroke pathogenic mechanism, acute treatment decision making, complication avoidance methods, and both primary and secondary prevention. The educational program focuses on the needs of acute and subacute stroke patients as managed by stroke system managers, nurse practitioners, clinical nurse specialists, physician assistants, stroke coordinators, stroke educators, and bedside stroke nurses.



2021 PROGRAM CHAIR

**Alicia Richardson**

MSN, ACCNS-AG, ANVP-BC, ASC-BC  
2018-2021



### LOCATION

ADERO Scottsdale, 13225 North Eagle Ridge Drive, Scottsdale, AZ 85268

### ROOM RATE \$249

For reservations, call 888-236-2427 or visit [www.aderoscottsdale.com](http://www.aderoscottsdale.com)  
Let them know you are with ANVC.

### REGISTRATION FEES

Non-Member.....\$375

Member.....\$275

### CONTINUING EDUCATION

14.9 CME and ANCC Credit Hours (3.75 Pharmacology Hours)

# MONDAY, NOVEMBER 15, 2021 7:15AM-5PM

- 7:15-8:15**            **REGISTRATION / WELCOME BREAKFAST Sponsored by Alexion**
- 8:15-8:45**            **PRESIDENTIAL ADDRESS**  
**Sharon Biby, MSN, APRN, AGPCNP-BC, ANVP-BC**  
Advanced Practice Stroke Nurse, The Moses H. Cone Memorial Hospital,  
Cone Health Stroke Center, Greensboro, North Carolina
- 8:45-10:00**        **CLINICAL LOCALIZATION OF STROKE SYMPTOMS**  
**Anne Alexandrov, PhD, AGACNP-BC, ANVP-BC, NVRN-BC, CCRN, FAAN**  
Professor of Neurology & Nursing, University of Tennessee Health Science  
Center (UTHSC); Chief Nurse Practitioner, UTHSC Mobile Stroke Unit Professor  
& NET SMART Program Director, Memphis, Tennessee
- 10:00-10:20**      **BREAK**
- 10:20-11:20**      **DEMYSTIFYING MULTI-MODAL CT IMAGING**  
**Jennifer Bonner, DNP, ACNP, ANVP-BC**  
Stroke Program Nurse Practitioner, Washington Regional Medical Center,  
Fayetteville, Arkansas
- Abby Doerr, DNP, APRN**  
Clinical Director, Interventional Labs and Non-Invasive Cardiology,  
Northwestern Medicine Central DuPage Hospital, Chicago, Illinois
- 11:20-12:30**      **REPERFUSION: WHICH WAY SHOULD WE GO? ALTEPLASE VS. TENECTEPLASE**  
**Skye Coote, NP, CCRN, MN, ANVP-BC, NVRN-BC**  
Nursing Coordinator, Mobile Stroke Unit, The Melbourne Brain Center  
at the Royal Melbourne Hospital, Melbourne, Australia
- Samarth P. Shah, PharmD, BCPS**  
University of Wisconsin Hospital, Madison, Wisconsin
- 12:30-1:45**        **LUNCH Sponsored By AstraZeneca**  
**Andrei Alexandrov, MD**  
Semmes-Murphey Professor and Chairman Department of Neurology  
at University of Tennessee Health Science Center (UTHSC)
- 1:45-2:30**        **CRAYONING OUTSIDE THE LINES WHEN PRACTICE STRAYS  
OUTSIDE TRADITIONAL BOUNDARIES**  
**Cesar Velasco, BSN, RN, ASC-BC**  
Stroke Program Coordinator, Penn State Health Milton S. Hershey  
Medical Center, Hershey, Pennsylvania
- Wendy Dusenbury, DNP, APRN, FNP-BC, AGACNP-BC, ANVP-BC**  
Nurse Practitioner, University of Tennessee Health Science Center  
(UTHSC); Memphis, Tennessee
- Skye Coote, NP, CCRN, MN, ANVP-BC, NVRN-BC**  
Nursing Coordinator, Mobile Stroke Unit, The Melbourne Brain Center  
at the Royal Melbourne Hospital, Melbourne, Australia

## MONDAY, NOVEMBER 15, 2021 7:15AM-5PM (continued)

- 2:30-3:45**      **LET'S TOAST: DETERMINING PATHOGENIC MECHANISM IN ACUTE ISCHEMIC STROKE AND TIA**  
Expert Panel
- 3:45-4:45**      **CLINICAL MANAGEMENT OF INTRACEREBRAL HEMORRHAGE: WHAT WORKS, WHAT DOESN'T, WHAT'S COMING**  
**Wendy Dusenbury, DNP, APRN, FNP-BC, AGACNP-BC, ANVP-BC, ASC-BC**  
Nurse Practitioner, University of Tennessee Health Science Center (UTHSC); Memphis, Tennessee
- 4:45-5:00**      **Closing**
- 5:30-7:00**      **Wine, Cheese, and Poster Reception Sponsored By Medtronic Neurovascular**

## TUESDAY, NOVEMBER 16, 2021 7:00AM-5PM

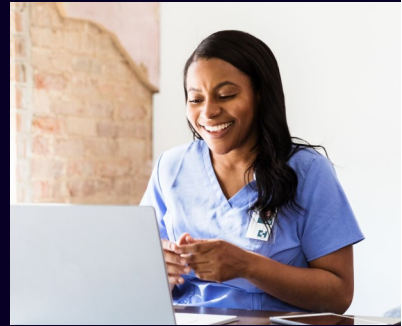
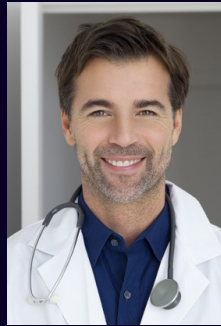
- 7:00-8:05**      **BREAKFAST Sponsored By Chiesi**  
**Dawn Meyer PhD, RN, FNP-C, FAHA**  
Associate Professor, Dept of Neurosciences  
Stroke Hospitalist Nurse Practitioner
- 8:05-9:00**      **BEYOND THE NIHSS: TIPPING THE SCALES**  
**Natalie Hall, MSN, NP-C, ANVP-BC**  
Cerebrovascular Neurosurgery Nurse Practitioner, Vanderbilt University Medical Center, Nashville, Tennessee
- 09:00-10:00**      **INPATIENT CODE STROKE! CHAMELEONS AND MIMICS**  
**Fern Cudlip, MSN, FNP, CNRN, NVRN-BC, ANVP-BC, FNCS**  
Neurovascular Nurse Practitioner, St. Joseph Health Medical Group, Santa Rosa, California
- 10:00-10:20**      **BREAK**
- 10:20-11:15**      **THE SHOW GOES ON:  
CRITICAL CARE AFTER THROMBOLYSIS AND THROMBECTOMY**  
**Rhonda Finnie, DNP, APRN, AGACNP-BC, ANVP-BC, ASC-BC, RNFA**  
Neurosurgery Nurse Practitioner, Advanced Practice Coordinator, Baptist Health-Little Rock, Little Rock, Arkansas
- 11:15-12:15**      **SLOW DOWN, YOU'RE MOVING TOO FAST:  
DOES EARLY MOBILITY IMPROVE STROKE OUTCOMES?**  
**Desiree Metzger-Cihelka, MSN, ARNP-C, ANVP-BC**  
Neurohospitalist and Neuro ICU Service, Mission Hospital Comprehensive Stroke Center, Asheville, North Carolina
- Anne Alexandrov, PhD, AGACNP-BC, ANVP-BC, NVRN-BC, CCRN, FAAN**  
Professor of Neurology & Nursing, University of Tennessee Health Science Center (UTHSC); Chief Nurse Practitioner, UTHSC Mobile Stroke Unit Professor & NET SMART Program Director, Memphis, Tennessee

- 12:15-1:15**      **EDUCATIONAL LUNCH SYMPOSIUM Sponsored By Medtronic**
- 1:15-1:40**      **SPECIALIZED STROKE UNIT VS. NICU FOR TPA AND THROMBECTOMY**  
**Wendy Dusenbury, DNP, APRN, FNP-BC, AGACNP-BC, ANVP-BC**  
 Nurse Practitioner, University of Tennessee Health Science Center (UTHSC); Memphis, Tennessee
- 1:40-2:40**      **HELP! HOW TO GAIN SUPPORT FROM ADMINISTRATION**  
**Michelle Whaley, MSN, CNS, CCRN, CCNS, ANVP-BC**  
 Stroke and Neurosciences Program Coordinator, Sky Ridge Medical Center, Lone Tree, Colorado
- Sandi Shaw, BSN, RN, ASC-BC**  
 System Stroke Program Director, Memorial Hermann Healthcare System, Houston, Texas
- 2:40-3:00**      **BREAK**
- 3:00-3:40**      **TIA: CLINICS, OBSERVATION UNITS, OR FULL ADMISSION**  
**Sherri Friedrich, DNP, APRN, ANVP-BC, SCRNP**  
 Program Manager, Nurse Practitioner, Neurosciences, Dignity Health Northridge Hospital Medical Center, Northridge, California
- 3:40-4:45**      **CONTROVERSIES IN STROKE PANEL**
- SPAZING OUT: VASOSPASM MANAGEMENT**  
**Rhonda Finnie, DNP, APRN, AGACNP-BC, ANVP-BC, ASC-BC, RNFA**  
 Neurosurgery Nurse Practitioner, Advanced Practice Coordinator, Baptist Health-Little Rock, Little Rock, Arkansas
- DIRECT TO THROMBECTOMY VS THROMBOLYSIS PRE-TREATMENT**  
**Skye Coote, NP, CCRN, MN, ANVP-BC, NVRN-BC**  
 Nursing Coordinator, Mobile Stroke Unit, The Melbourne Brain Center at the Royal Melbourne Hospital, Melbourne, Australia
- TRANSFER FROM PSC TO CSC: WHAT'S THE PROBLEM?**  
**Jennifer Patterson, Ph.C., ACNP-BC, CCRN, FHM**  
 Lead Advanced Practice Provider, CHI Memorial Stroke and Neuroscience Center, Chattanooga, Tennessee
- 4:45-5:00**      **ANVC 2022, A LOOK AT WHAT'S AHEAD**  
**Anne Alexandrov, PhD, AGACNP-BC, ANVP-BC, NVRN-BC, CCRN, FAAN**  
 Professor of Neurology & Nursing, University of Tennessee Health Science Center (UTHSC); Chief Nurse Practitioner, UTHSC Mobile Stroke Unit Professor & NET SMART Program Director, Memphis, Tennessee
- Sharon Biby, MSN, APRN, AGPCNP-BC, ANVP-BC**  
 Advanced Practice Stroke Nurse, The Moses H. Cone Memorial Hospital, Cone Health Stroke Center, Greensboro, North Carolina



*In support of improving patient care, this activity has been planned and implemented by Arizona State University and ANVC. Arizona State University is jointly accredited by the Accreditation Council for Continuing Medical Education (ACCME), the Accreditation Council for Pharmacy Education (ACPE), and the American Nurses Credentialing Center (ANCC) to provide continuing education for the healthcare team.*

# ANVC ABSTRACT SUBMISSION



The ANVC Annual Conference is the perfect venue to share your original science and quality improvement findings with your peers. We welcome submissions that share methods to improve stroke systems of care, important clinical interventions and findings that improve patient outcomes, and innovative strategies to better develop stroke team members.



Instructions for submission can be found at [www.anvc.org](http://www.anvc.org)

Submission deadline: September 30, 2021

# CONFERENCE PARTNERS

