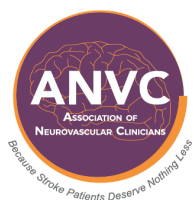


# 2022 ANVC CONFERENCE

PRE-CONFERENCE NOV. 9-10 | CONFERENCE NOV. 11-12

ORLANDO, FLORIDA



Join us, and get involved in improving quality and access to stroke care.

**ASSOCIATION OF NEUROVASCULAR CLINICIANS (ANVC)**

Up to 36 CEUs available (includes up to 6.25 Pharmacology hours)

# MESSAGE FROM THE PROGRAM CHAIR

On behalf of the Association of Neurovascular Clinicians (ANVC), we invite you to join us for our 2022 Annual Meeting, being held live and in-person in beautiful Orlando, Florida. This conference is focused on provision of state-of-the-science, acute stroke clinical and imaging-based diagnosis, methods for determination of stroke pathogenic mechanism, acute treatment decision making, complication avoidance methods, and both primary and secondary prevention. The educational program focuses on the needs of acute and subacute stroke patients as managed by stroke system managers, nurse practitioners, clinical nurse specialists, physician assistants, stroke coordinators, stroke educators, and bedside stroke nurses.



2022 PROGRAM CHAIR

**Cesar Velasco**

BSN, RN, ASC-BC

2019-2022

## LOCATION

Caribe Royale Orlando  
8101 World Center Drive  
Orlando, Florida 32821



## ROOM RATE \$229

(Rate is valid for 3 additional days pre- and post-conference; pending hotel availability)  
Register and book your hotel room online, at [www.anvc.org/2022conference](http://www.anvc.org/2022conference)

## REGISTRATION FEES

Non-Member.....\$425                      Member.....\$300

## AVAILABLE PRE-CONFERENCE COURSES

November 9-10	ASC Review Course and Exam.....	\$250*
November 9-10	ANVP Review Course and Exam.....	\$200*
November 10	Transcranial Doppler Workshop.....	\$75
November 10	Clinical Localization & Imaging Correlates.....	\$75

*\*Examination for either course, must be taken at the conference to qualify for this discounted rate.*

## CONTINUING EDUCATION

Up to 36 CEUs available (includes up to 6.25 Pharmacology hours)



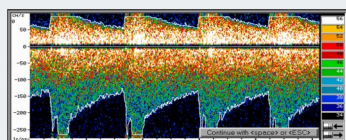
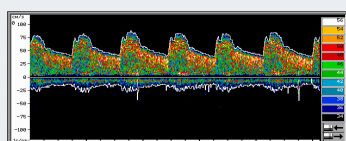
## ADVANCED STROKE COORDINATOR (ASC-BC)

The ASC certification examination is the only certification that recognizes the unique and essential contributions of a stroke coordinator. Attainment of ASC-BC status demonstrates expertise in stroke competencies including understanding and mastery of skills used to diagnose stroke, evidence-based management principles for both ischemic and hemorrhagic stroke, knowledge of role history and role evolution, stroke data collection, data analysis methods, and data presentation, quality management, and principles and strategies supporting effective adult education, change mastery, and time management. Review courses supporting attainment of the ASC-BC credential are available throughout the year. Exams can be taken year-round at Prometric Test Centers.



## ADVANCED NEUROVASCULAR PRACTITIONER (ANVP-BC)

The ANVP certification examination is the premier certification in acute neurovascular clinical practice for advanced practice providers (APP). Attainment of ANVP-BC status demonstrates APP expertise in the assessment, medical diagnosis by localization and neuroimaging interpretation, and hyperacute treatment decision-making for highly vulnerable acute stroke patients. The ANVP's incorporation of key pathophysiologic concepts and evolving research findings also ensures expertise in methods for establishment of stroke pathogenic mechanism with related secondary prevention knowledge and competencies. The advanced scope of practice tested by the exam has made the ANVP-BC credential an important requirement at numerous acute care practice sites that aim to use APPs in expanded roles supporting telemedicine, mobile stroke units, and stroke emergency response. Exam eligibility is supported by strict criteria, ensuring certification of clinicians capable of combining theoretical knowledge with expert hands-on clinical practice skills. Review courses supporting attainment of the ANVP-BC credential are available throughout the year. Exams can be taken year-round at Prometric Test Centers.



## TRANSCRANIAL DOPPLER (TCD)

### WORKSHOP & HANDS-ON PRACTICE

Transcranial Doppler (TCD) vascular imaging is a requirement for Comprehensive Stroke Centers to support stroke diagnoses, an understanding of distinct stroke pathogenic mechanisms, and to detect complications and evolving clinical conditions warranting treatment. Led by two world leaders in TCD imaging, this workshop will provide participants with an understanding of TCD technology, indications for use, and waveform interpretation, culminating in hands-on experience using the newest technology available, including TCD robotics.



## CLINICAL LOCALIZATION & IMAGING CORRELATES

This course focuses on building skills in identification of clinical signs suggestive of stroke in different vascular territories with review of neuroimaging consistent with these findings.

## WEDNESDAY, NOVEMBER 09, 2022

0700-0800	BREAKFAST	
0800-1200	PART 1: ASC REVIEW COURSE (Hibiscus Room)	
1200-1300	LUNCH	
1300-1700	PART 2: ASC REVIEW COURSE (Hibiscus Room)	ANVP REVIEW COURSE (Boca 8 Room)

## THURSDAY, NOVEMBER 10, 2022

0700-0800	BREAKFAST	
0800-1200	PART 3: ASC REVIEW COURSE (Bonaire 5 Room)	ANVP CERTIFICATION EXAM (Hibiscus Room)
1200-1300	LUNCH	
1300-1700	ASC CERTIFICATION EXAM (Bonaire 5 Room)	
	<b>TRANSCRANIAL DOPPLER WORKSHOP</b> (Hibiscus Room)  <b>Andrei Alexandrov, MD</b> Semmes-Murphey Professor and Chairman Department of Neurology at University of Tennessee Health Science Center (UTHSC)  <b>Mark Rubin, MD</b> University of Tennessee Health Science Center (UTHSC) Department of Neurology	
	<b>CLINICAL LOCALIZATION &amp; IMAGING CORRELATES</b> (Bonaire 6 Room)  <b>Anne Alexandrov, Ph.D., AGACNP-BC, ANVP-BC, NVRN-BC, CCRN, FAAN</b> Professor of Neurology & Nursing, University of Tennessee Health Science Center (UTHSC); Chief Nurse Practitioner, UTHSC Mobile Stroke Unit Professor & NET SMART Program Director  <b>Abby Doerr, DNP, APRN, FNP-BC, ANVP-BC, CVRN</b> Director of Interventional, Imaging, CP Rehab and Non-invasive Cardiology, Northwestern Medicine Central DuPage Hospital	



*In support of improving patient care, this activity has been planned and implemented by Arizona State University and ANVC. Arizona State University is jointly accredited by the Accreditation Council for Continuing Medical Education (ACCME), the Accreditation Council for Pharmacy Education (ACPE), and the American Nurses Credentialing Center (ANCC) to provide continuing education for the healthcare team.*



*This activity was planned by and for the healthcare team, and learners will receive 4 Interprofessional Continuing Education (IPCE) credit for learning and change.*



# 2022 ANVC CELEBRATION DINNER

CARIBE ROYALE ORLANDO | NOVEMBER 10 7-11 PM

A NIGHT OF COCKTAILS, DINNER, AND DANCING.

\$50.00 PER ATTENDEE



**Join us for a celebration of Neurovascular Clinicians like you!**

Catch up with colleagues, and network with peers dedicated to the advanced care and management of stroke patients around the world.

**Registration is available to all conference attendees at [www.anvc.org](http://www.anvc.org)**

FRIDAY, NOVEMBER 11, 2022

0700-0815	REGISTRATION / WELCOME BREAKFAST (Caribbean 3 & 4 Room)
0815-0845	<b>OPENING/PRESIDENTIAL ADDRESS</b> (Caribbean 1 & 2 Room) <b>Anne Alexandrov, Ph.D., AGACNP-BC, ANVP-BC, NVRN-BC, CCRN, FAAN</b> Professor of Neurology & Nursing, University of Tennessee Health Science Center (UTHSC); Chief Nurse Practitioner, UTHSC Mobile Stroke Unit Professor & NET SMART Program Director
0845-1000	<b>KEYNOTE: Seizures After Stroke: An Often Hidden and Lethal Threat</b> <b>Stephan Mayer, MD, FCCM, FNCS</b> Professor of Neurocritical Care and Emergency Neurology Services, Westchester Medical Center Health System and Professor of Neurology and Neurosurgery at New York Medical College
1000-1030	BREAK
1030-1050	<b>DEBATE: Perfusion Imaging, Does Every Stroke Need It?</b> <b>CON-Dawn Meyer PhD, RN, FNP-C, FAHA</b> Associate Professor, Dept of Neurosciences Stroke Hospitalist Nurse Practitioner  <b>PRO-Skye Coote, NP, CCRN, MN, ANVP-BC, NVRN-BC</b> Nursing Coordinator, Mobile Stroke Unit, The Melbourne Brain Center at the Royal Melbourne Hospital
1050-1110	<b>DEBATE: Should Patients Get Thrombolysis Before EVT?</b> <b>CON-Abby Doerr, DNP, APRN, FNP-BC, ANVP-BC, CVRN</b> Director of Interventional, Imaging, CP Rehab and Non-invasive Cardiology, Northwestern Medicine Central DuPage Hospital  <b>PRO-Elizabeth Robinson, MSN, ANP-BC, ANVP-BC</b> Stroke Neurology Nurse Practitioner, Baptist
1110-1130	<b>DEBATE: Should Pregnant Women Receive Thrombolysis?</b> <b>CON-Cara Guthrie-Chu, MSN, APRN, AGACNP-BC, ANVP-BC, CCRN</b> Neurosciences Acute Care Nurse Practitioner, Medical City Fort Worth  <b>PRO-Adam Ganzman, MSN, RN, APN-BC, ANVP-BC, SCRNP, EMT-B</b> Director of Neuroscience, Robert Wood Johnson University Hospital
1130-1150	Q&A SESSION
1200-1315	LUNCH



**FRIDAY, NOVEMBER 11, 2022** (continued)

	<b>STROKE CENTER LEADERSHIP SESSIONS</b> (Boca 3 Room)	<b>PATHOPHYSIOLOGY OF STROKE SESSIONS</b> (Boca 4 Room)
<b>1300-1530</b>	<b>Lessons Learned from the IMPROVE Stroke Project</b> <b>Lisa Monk, MSN, RN, CPHQ</b> Health Systems & Implementation Research, Duke Clinical Research Institute	<b>Pathogenesis and Management of Pseudobulbar Syndrome in Stroke</b> <b>Brandon Baughman, Ph.D., ABPP-CN</b> Semmes-Murphey Clinic Assistant Professor Department of Neurology at University of Tennessee Health Science Center (UTHSC)
	<b>The Pharmacist's Role in Transition of Care</b> <b>Ritu Light, Pharm.D.</b> Stroke Transitions of Care Pharmacist, Penn State Health Hershey Medical Center	<b>It's in the Eyes: Understanding Unusual Eye-Related Stroke Symptoms</b> <b>Alicia Richardson, MSN, RN, ACCNS-AG, ANVP-BC, ASC-BC</b> Clinical Nurse Specialist and Comprehensive Stroke Center Program Manager, Penn State Health Hershey Medical Center
	<b>Navigating Corporate Politics</b> <b>Karen Seagraves, PhD, MPH, NEA-BC, ACNS-BC, ANP-BC, FAHA</b> Neuroscience Administration Consultant	<b>Reversal of Coagulopathic Hemorrhage</b> <b>Katherine L. March, Pharm.D., BCPS</b> Clinical Pharmacy Specialist of Acute Stroke, PGY2 Internal Medicine Residency Coordinator at Methodist University Hospital, Assistant Professor at University of Tennessee College of Pharmacy
	<b>Cultural Considerations: Engaging Diverse Communities with Stroke Prevention Education</b> <b>Farah Osmani, AGACNP-BC</b> Director Neurosciences Program, Regional Medical Center	<b>Differential Diagnosis of Vertigo</b> <b>Tawnae Thorsen, BSN, RN</b> Kaiser Permanente
	<b>It's All About the Benjamin's: Acute Stroke Economics 101</b> <b>Debbie Hill, BS, FAHA</b> Stroke Center Consultant and Advisor, Co-Founder Stroke Challenges	<b>When the Pressure Drops: Hypoperfusion &amp; Watershed Infarcts</b> <b>Tanya Frost, Stroke Clinical Nurse Consultant</b> Eastern Health Australia Department of Neuroscience
<b>1530-1545</b>	<b>BREAK</b>	
<b>1545-1630</b>	<b>KEYNOTE: Wake-up to Patients with Treatable Strokes: Extending the Thrombolysis Window</b> (Caribbean 1 & 2 Room) <b>Skye Coote, NP, CCRN, MN, ANVP-BC, NVRN-BC</b> Nursing Coordinator, Mobile Stroke Unit, The Melbourne Brain Center at the Royal Melbourne Hospital	
<b>1700-1830</b>	<b>WELCOME RECEPTION/POSTER PRESENTATION</b> (Caribbean 3 & 4 Room)	

SATURDAY, NOVEMBER 12, 2022

0700-0800	BREAKFAST (Caribbean 3 & 4 Room)
0800-0900	<b>KEYNOTE: Palliative Care of the Stroke Patient</b> (Caribbean 1 & 2 Room) <b>Robert Holloway, MD, MPH</b> Professor of Neurology, Department of Medicine, and Palliative Care and Edward A. and Alma Vollertsen Rykenboer Chair of the Department of Neurology at the University of Rochester School of Medicine
0900-1000	<b>KEYNOTE: Snort, Shoot, Smacked: Illicit Substances and the Risk of Stroke</b> <b>Samarth P. Shah, Pharm.D., BCPS</b> University of Wisconsin Hospital
1000-1015	BREAK
1015-1100	<b>KEYNOTE: Antihypertensive Agents-What Drug for Which Patient?</b> <b>Anne Alexandrov, Ph.D., AGACNP-BC, ANVP-BC, NVRN-BC, CCRN, FAAN</b> Professor of Neurology & Nursing, University of Tennessee Health Science Center (UTHSC); Chief Nurse Practitioner, UTHSC Mobile Stroke Unit Professor & NET SMART Program Director
1100-1200	<b>KEYNOTE: One Size Fits All? Standardizing Stroke Coordinator Roles and Titles.</b> <b>Skye Coote, NP, CCRN, MN, ANVP-BC, NVRN-BC</b> Nursing Coordinator, Mobile Stroke Unit, The Melbourne Brain Center at the Royal Melbourne Hospital
1200-1315	LUNCH
1315-1415	<b>EXPERT PANEL: If I Could Improve Stroke Center Certification, I Would...</b> <b>Anne Alexandrov, Ph.D., AGACNP-BC, ANVP-BC, NVRN-BC, CCRN, FAAN</b> Professor of Neurology & Nursing, University of Tennessee Health Science Center (UTHSC); Chief Nurse Practitioner, UTHSC Mobile Stroke Unit Professor & NET SMART Program Director, Memphis, Tennessee  <b>Alicia Richardson, MSN, RN, ACCNS-AG, ANVP-BC, ASC-BC</b> Clinical Nurse Specialist and Comprehensive Stroke Center Program Manager, Penn State Health Hershey Medical Center  <b>Jackie Owens, BSN, RN, MHA/ED, ASC-BC, SCRNP</b> Director Neuro Critical Care, Mobile Infirmary Medical Center  <b>Debbie Hill, BS, FAHA</b> Stroke Center Consultant and Advisor, Co-Founder Stroke Challenges  <b>Wendy Dusenbury, DNP, APRN, FNP-BC, AGACNP-BC, ANVP-BC</b> Nurse Practitioner, University of Tennessee Health Science Center (UTHSC)  <b>Michelle Whaley, MSN, CNS, CCRN, CCNS, ANVP-BC</b> Stroke and Neurosciences Program Coordinator, Sky Ridge Medical Center  <b>Lisa Zaykoski, BSN, RN, ASC-BC, TCRN</b> Stroke Coordinator, Commonwealth Health Regional Hospital



Conference Agenda

**SATURDAY, NOVEMBER 12, 2022** (continued)

<b>1415-1515</b>	<b>KEYNOTE: Pathophysiology and Bedside Screening of Swallow Dysfunction Post-Stroke</b> <b>Catriona M. Steele, Ph.D., S-LP, CCC-SLP, Reg. CASPLO, ASHA Fellow</b> Senior Scientist and Director, Swallowing Rehabilitation Research Laboratory, KITE-Toronto Rehabilitation Institute-University Health Network, Professor, Speech-Language Pathology, Rehabilitation Sciences Institute, University of Toronto
<b>1515-1530</b>	<b>BREAK</b>
<b>1530-1630</b>	<b>ANVC 2023: A LOOK AT WHAT'S AHEAD</b> <b>Anne Alexandrov, Ph.D., AGACNP-BC, ANVP-BC, NVRN-BC, CCRN, FAAN</b> Professor of Neurology & Nursing, University of Tennessee Health Science Center (UTHSC); Chief Nurse Practitioner, UTHSC Mobile Stroke Unit Professor & NET SMART Program Director



*In support of improving patient care, this activity has been planned and implemented by Arizona State University and ANVC. Arizona State University is jointly accredited by the Accreditation Council for Continuing Medical Education (ACCME), the Accreditation Council for Pharmacy Education (ACPE), and the American Nurses Credentialing Center (ANCC) to provide continuing education for the healthcare team.*

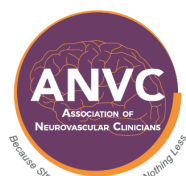


*This activity was planned by and for the healthcare team, and learners will receive 12.75 Interprofessional Continuing Education (IPCE) credit for learning and change.*



## CALL FOR 2022 ANVC CONFERENCE ABSTRACT SUBMISSIONS

The ANVC Annual Conference is the perfect venue to share your original science and quality improvement findings with your peers. We welcome submissions that share methods to improve stroke systems of care, important clinical interventions and findings that improve patient outcomes, and innovative strategies to better develop stroke team members.



Instructions for submission can be found at [www.anvc.org](http://www.anvc.org)

**Submission deadline: August 31, 2022.**

THANK YOU TO ALL OF OUR PARTNERS





# ANVC MEMBERSHIP

Membership brings discounts, international member forums, our online journal, scientific practice updates and professional networking opportunities.

**COST FOR ANNUAL MEMBERSHIP IS \$60.00**



For more information visit [www.anvc.org](http://www.anvc.org)



1935 County Road B2 W  
Suite 165  
Roseville, MN 55113

PRST STD  
U.S. Postage  
PAID